

The Sheath

August General Meeting

Date: August 28, 2009

Time: 7:30 PM General Meeting

Place: San Mateo Garden Center

605 Parkside Way, San Mateo, CA

Take the Alameda de las Pulgas exit off of Hwy. 92.

The Garden Center is located between 26th and 28th Avenues

Mailing address: P.O. Box 6894, San Mateo, CA 94403-6894

A 501(c)3 organization.

MOUNTED ORCHIDS - FACT AND FANTASY Speaker Harry Phillips

Harry Phillips was born in San Diego, California on July 9, 1953. His Father taught him to appreciate plants at an early age. In January of 1963 Harry's brother Andy (of Andy's Orchids fame) was born, and six years later is when it all started. They were both exposed to exotic plants and flowers at an early age, but when Andy became interested and latter obsessed with orchids, Harry some how resisted becoming involved with them for as long as he could. He assisted Andy in his passion by building his first two green houses, and Andy would reward him with a hybrid that was in bloom, tell him to bring it back when it goes out of bloom, and exchange it for one in bloom. Well this would only last about a year until he decided that he wanted to keep one and get it to re-bloom, the beginning of the end.

In 1986 Harry, with his soon to be wife Leslie moved with Andy and his orchid collection to Encinitas, California. Being constantly exposed to all of Andy's orchids was beginning to have an effect on Harry. Shortly after, Andy left for four months for Costa Rica, and placed Harry in charge of the

No separate skill session

**Meeting starts Early -
7:30 PM**

**Show and Tell Table
followed by**

Speaker: Harry Phillips

**Mounted orchids and
how to mount them**

**Opportunity table by
Andy's Orchids**

collection. When Andy returned he found that Harry had not killed too many plants and managed to become even more addicted. Andy, now feeling more confident about leaving his orchid collection under Harry's care, began to plan a cycling trip through South America which ended up lasting two years. After that it was all over for Harry, he was completely addicted to orchids.

Harry assisted Andy part time, with the beginnings of Andy's Orchids, for 10 years while holding a full-time job to pay the mortgage, going full time about 10 years ago. His passion in orchids are in the Genera Sobralia and Elleanthus, but you ask him at any particular time of the year which is his favorite orchid, it will most likely be the one or ones in bloom at that time. He has traveled in Mexico, the Caribbean, and Ecuador viewing orchids in the wild. Harry believes that growing epiphytic orchids the way they grow in nature is best and the orchids seem to agree. He will share with you his experiences with growing mounted orchids, and would like to dispel the fantasy that growing mounted orchids is difficult.

Harry will demonstrate how to mount orchids during his talk. Andy's orchids will supply the Opportunity Table plants.



Ascda. Mikasa Blue
Janusz Warszawski



V. denisoniana
Rene Biggs



Den. bracteosum x *Den. laeREFOLIUM* Tanya Lam



Stan. tigrina Paul Simon



Jackie, Donna, Anne (standing),
Gloria, and Evelyn



Slc. Fire Magic - 1st bloom seedling
Susan Huff



L. purpurata v. *carnea* Rex Castell



Den. brevifolium Ginette Sanchou



Coel. mooreai Anne Riegel



Christine enters her plants on the
Show & Tell table



Four *Neof. falcatas* Fred Cox



C. Winterland 'Floralia' Fred Shull

President's Corner

We all have our favorite potting mixtures. In fact many of us have different favorite mixtures depending on the genera, the conditions in which we will place the plant, how often we intend to water, and whether we wish to repot the plant on an annual basis, or go several (perhaps many) years before we repot a plant again. The really funny thing is that those of us who are trying to be so careful to get the media just so are also those who continually change the media from year to year in the search for the 'perfect' media.

Changing the components in one's media can definitely be a good thing for plants, or it could be a bad thing. The only way to know is to observe your plants in the various media to see which are doing best. Of course, this presumes we keep track of the specific media used for each plant, and I'll guess that most of us aren't very good at this type of record keeping. Major changes in media such as bark vs. coco husk chips are obvious, but minor changes like the addition of additives may not be obvious at all. There are also other factors which change, and over which we have little or no control. Several years ago the Hetch Hetchy water delivery system changed from standard chlorination of water to the use of chloramines. For some plants, environmental changes of this type have an effect, which means starting all over again with experimenting with the media.

Some of us are hose-aholics. The only real solution for people with this affliction is to put the plants in extremely free-draining media. Nothing could be freer draining than just mounting a plant on an appropriate stick. Harry Phillips of Andy's Orchids knows a thing or two about mounted orchids, and we should all listen carefully as he tells us of the benefits of mounting. If you're able to mount a plant successfully, and if you're heavy-handed with the hose, mounting can provide many years worth of stable growth for a plant, without having to worry about repotting or media. No media at all just may be the perfect media for some plants!

Cheers,

Ken

AOS Corner

It is Fall Orchid Convention time – or at least time to plan to go the Fall Orchid Convention! The Southland Orchid Show Committee and the Huntington Botanical Gardens, outside Los Angeles, invite you to Arcadia, California on October 14 – 17, 2009. You can get the details from the AOS web site: www.aos.org under "Events" and then "Members Meetings" although you do not have to be an AOS member to attend. All orchid people are welcome! You can also call Simone Friend at 562-431-1247 for a registration packet. This is a great orchid show at a fabulous botanical garden where you will be able to listen to orchid lectures as well as tour the gardens. The Huntington has 150 acres with 12 specialized gardens so it is worth going for the gardens alone but even better when there is an orchid show. If you are an AOS member you will want to attend the AOS Town Hall Meeting on Saturday morning. You can wear your AOS pin to show your support – if you don't have one they can be purchased for \$25, postage included, from the AOS web site. If you are wishing for a fall orchid trip – consider the Huntington!

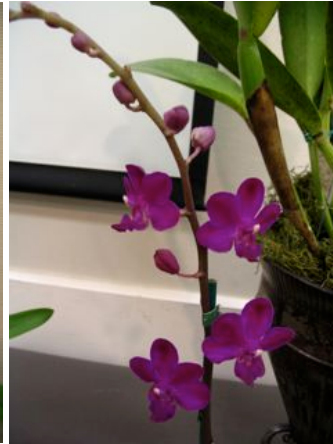
Carol Holdren, Affiliated Society Committee Chair



Macroclinium manabinum
Ginette Sanchou



Rhy. coelestis
Anna Chai



Phal. Rising Sun 'Gertie'
AM/AOS Gloria Bygdnes



Mtssa. Shelob 'Webmaster'
HCC/AOS Chaunie Langland



L. purpurata v. sanguinea 'Hot Nights'
AM/AOS Ken & Amy Jacobsen



Mike, Rene, and Mary keep order at
the back of the room.



Masd. Maggie Adalyn
Gerardus and Mary Staal



Patrick, Mike, Christine, and a
fast-moving Rebecca



Masd. Aquarius Trudy Hadler



Thu. gabonensis 'Adagent' AM/AOS
Anna Chai



Masd. Ken Dole
Gerardus and Mary Staal



C. mossiae v. alba Fred



Clty. Chantilly Lace
Gerardus and Mary Staal

Member News



A VERY HAPPY BIRTHDAY TO: Scott Dallas, Zachery Coney, Ginette Sanchou, Janet Rector, Gwen Layritz, Mary Vizzi, Susan Hamilton, Eugene Standifer, Gregory Mayfield, Dr. Huei-Mei Chen, and Susan Huff.

HAPPY BELATED BIRTHDAY WISHES to: Catherine Walden and Valerie Jones. (July birthdays I missed - sorry!)

Our Condolences to Gwen Layritz . Gwen's husband, Clem A. Layritz, passed away on May 25th after a short fight with Lymphoma. Clem was an accomplished composer and pianist. He was employed by Pan Am for 30 years in flight watch, which is part of the in dispatch department. Gwen and Clem were married for more than 40 years.

Editor's Corner

A big THANK YOU to **Jackie Becker** for taking over the job of mailing out the snail mail version of the newsletter. I can't tell you how much I appreciate this! (Also, thank you to **Susan Tong** and **Patrick Hoe** who took on this job until Susan's work location changed and she acquired a long commute.)

We mail a few less than 40 newsletters now, but it is still a time consuming job. When I first took over the editor job from Rene, we were mailing out 200 newsletters. The first newsletter took me about 4 hours just for folding, labeling, stamping, and stapling. If you are wondering why Rene never included photos in her version of the newsletter, I think you know the answer now - she was investing that time in just sending the newsletter out. Every month for 13 years. Incredible job Rene!

A thought from Mary Gerritsen about supporting the Orchid Conservation Alliance

POS members, think about donating just \$10 each to the OCS through POS (less than you spend on orchids for one year). If everyone did this, we would donate much needed dollars to support orchid conservation. For example, we have -160 members in the POS. Multiply that by 10, and that is \$1600, a very significant donation in support of Orchid Conservation.

Your donation is also tax deductible, the OCS is a 501(c)3 organization.

Thanks, Mary

Snooping Around Fred Cox and Cordy Wong's Greenhouse

Last month Fred and Cordy invited me to tour their greenhouse, located on one side of Fred's house. I learned about fragrant phalaenopsis, species phalaenopsis, beautiful phalaenopsis foliage, different growing conditions for *Neof. falcata*, how to bloom paphiopedilums, and how to stuff a greenhouse really full! It was a lot of fun.



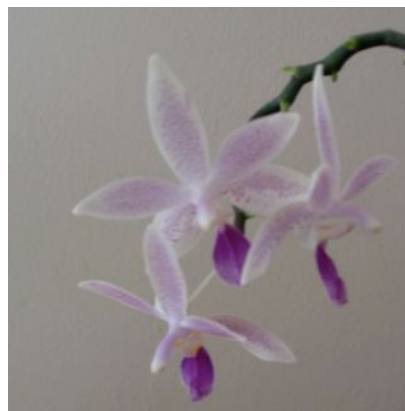
Fred and Cordy in the greenhouse



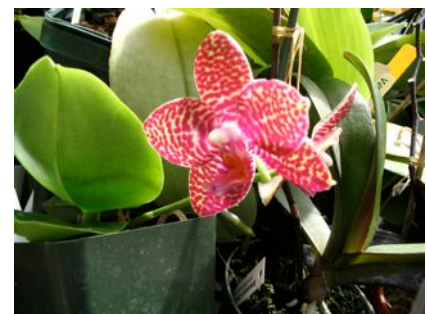
Phal. Brother Peptide x *Phal.* *violacea*



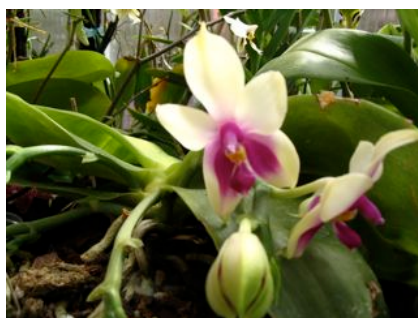
A variegated leaf *Neof. falcata*



Phal. *equestris*



Phal. Perfection Is 'Chen'
FCC/AOS



Phal. *bellina*



Beautiful *Phal.* *stuartiana* leaf



Making the most of the
greenhouse space

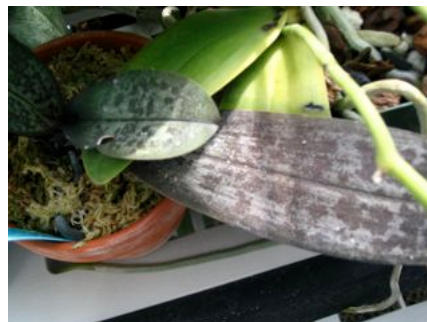
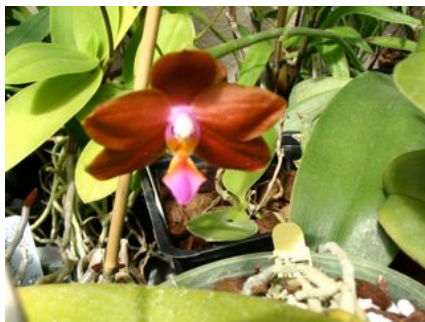
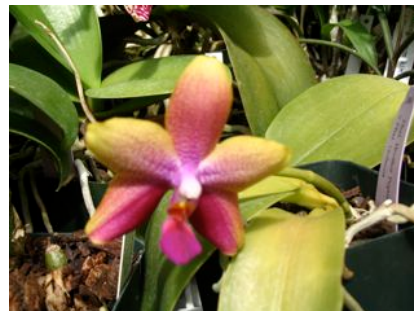
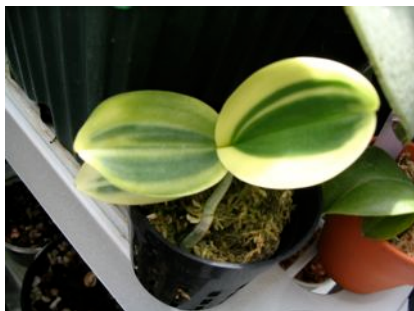
Upcoming Events

September 12 & 13 - San Francisco Orchid Society's Orchids in the Park Show and Sale - 10AM - 5PM - San Francisco County Fair Building (Hall of Flowers) 9th Ave. and Lincoln Way, San Francisco. Admission \$3. For more information: www.orchidsanfrancisco.org or call (415) 665-6079

September 12-13 - Sacramento Orchid Forum Fall Show, Shepard Garden and Art Center, 3330 McKinley Blvd., Sacramento, CA. Contact: Jeff Tyler, 5520 Fruitridge Rd., Sacramento, CA 95820; (916) 455-4292; cgaxquai@tokyo.com.

October 23 - Peninsula Orchid Society Annual Auction - Start getting those plants ready for sale! Have something to donate? (Books, pots, decorative items, etc.) Call Paul Reeve at 650-366-3251.

More photos from Fred and Cordy's greenhouse



Top L to R: *Sedirea japonica* variegated leaves; Phal. Brother Pepride x *Phal. violacea*; *Neof. falcata*

Middle L to R: Phal. Shenandoah Fire ; another type of attractive Phal. leaf ; *Den. stratiotes* x *Den. antennatum*.

Bottom L to R: A shelf of *Neofinetia falcatas*; another efficient



A VISIT TO CARMEL ORCHID SOCIETY

Their meeting followed a protocol similar to ours: general business, show and tell, speaker's talk, ending with the opportunity table. Yes, they had goodies too! Their show and tell format differed from ours - each member who brought plants got up and presented their own. The meeting takes place in a nice large room in an attractive church.

The speaker for the Carmel Orchid Society July meeting was Satomi Kasahara of Seed Engei. Her father, Shigeru Kasahara, owner and founder of Seed Engei, was with her at the meeting. Satomi gave the presentation as her knowledge of English is stronger than her father's. They are well known growers of *Neofinetia falcata* in Japan, where Shigeru is vice-chairman of Japan Fukiran Society (est. 1920) and chairman of the Shizuoka Fukiran Society.

Neofinetia falcata is known as Fu-ran - wind orchid - in Japan. There are more than 250 registered varieties. Satomi explained the points by which each plant is appreciated and classified. There are four leaf shapes (I can only remember "bean".) There are also four types of leaf variegation (relating to stripes, placement of stripes, and spots). If a leaf has two types of variegation then the price becomes very high. The stem can be green or brown - which doesn't affect the appreciation of the plant, but is used in the description. Roots can be mud brown, green or ruby.

The Japan Fukiran Society issues a new ranking chart for the different varieties every year (available only in Japanese). For a new variety to be registered it must be made with three different mother plants.

There are several big meetings each year, the biggest and earliest one being in May. This is before the plants are in flower, and they are judged solely on foliage. The plants must be potted in a ceramic pot - clay or plastic pots will earn disqualification. Judging takes place the first day of the meeting. In the first round of judging, the top three plants from each variety are selected. In the second round, the top fifteen plants are selected from the first round winners. From this group of fifteen, the winner is chosen. The second day of the meeting is devoted to an auction. It is common for participants to show up with \$10,000 in their pockets. Top plants go for around \$5,000.

Culture: Fu-ran should be grown in clay or net pots in sphagnum moss. In California a 60% shade cloth is advised in the summer. Good air movement is a requirement and plants should be allowed to dry between waterings. Excessive watering will result in more plant growths and fewer flowers. Repotting should be done in the Spring.

During the talk, Satomi said that minimal fertilization should be done. At the question and answer period at the end, one person asked how often Seed Engei fertilized their plants each year. The answer from Shigeru was "once". This caused everyone there to pause and consider this idea. Then another person asked what kind of fertilizer they used. Shigeru said that of course you could not get the same type of fertilizer here as in Japan, but it finally came out that they apply time release fertilizer at the beginning of the growing season. Everyone started breathing again.

Following the talk we had goodies, bought opportunity table tickets, and looked over the Seed Engei plants for sale. I won two *Neof. falcatas* from the opportunity table and bought two inexpensive plants from Satomi. I also held a lovely bean leaf variety, with attractive variegation and no price on it, for a moment. As I saw the look of fear in Shigeru's eyes as he retrieved the plant before I could drop it, I knew if you have to ask how much it is, you can't afford it.

(There are probably errors about the talk - my note taking is not optimal! Ed.)



Satomi Kasahara and Fu-ran for sale



Carmel
Orchid
Society
July
Show &
Tell Table



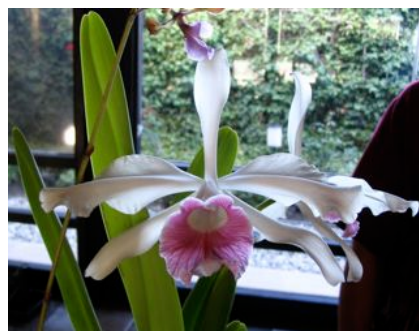
Bl. Morning Glory



V. tessalata x V. denisoniana



Angcm. magdalena



Three Laelias - incomplete information on the varieties

Are you interested in attaining orchids from Floralia (a Brazilian orchid grower)? Maybe get something that no one else around here has? Floralia will be attending the San Diego Orchid Fair (Oct. 2-4 in Encinitas) and the Southland Orchid Show (Huntington Gardens, Oct. 15-18). You can order ahead and they will deliver your plants to you there. If you would like more information, e-mail the_sheath_editor@earthlink.net and I will forward the e-mail that has the details, or call Chaunie at 510-494-8850 and I will give you the information Dennis Olivas forwarded to me. Go to www.floralia.com.br to see what they have.

Unclassifieds

Members may advertise orchid related items. The ad is free. E-mail your ad to the_sheath_editor@earthlink.net or mail to 878 Cashew Way, Fremont, CA 94536. Be sure to include your name and phone number. Ads must be received by the 1st of the month to be included that month's newsletter.

Tanya Lam Orchid Supplies - for all orchid growing needs

Plastic Pots, Clear Pots, Net Pot, Baskets ❁ Fir Bark, Coconut Chips, Coir, Perlite, Lava Rock, Sphagnum Moss ❁ Fertilizer, Hangers, Superthrive, Plant Clips, Cork Bark, Tree Fern Mount ❁ and many more items!
Contact Tanya Lam at 408-826-1101 or tanyalam.orchids@gmail.com
Free delivery to SCOVS, MOS, POS, OSC, SFOS Monthly Meetings

August Board Meeting

The Board meeting will be held on Friday, August 28, at Fresh Choice Restaurant, 1952 S El Camino Real in San Mateo (close to Hwy. 92). (650) 341-8498. The meeting will begin at 5:00PM.

The board meetings are open to all members and we'd like to encourage you to attend. If you have any issue that you'd like brought to the board, but cannot attend, you can call any board member and they will present your issue for you.

2009 Board of Directors

President: Ken Jacobsen 650-631-4235

Vice President: Mike Rector 650-366-3401

Treasurer: Trudy Hadler 510-483-1277

Rec. Secretary: Rebecca Grubbs 650-560-9037

Corr. Secretary: Judy Evans 650-593-8625

Ways & Means CP: Paul Reeve 650-366-3251

Membership CP: Chaunie Langland

Director at Large: Carol Zoltowski 415-657-3222

Director at Large: Mary Gerritsen 650-348-6492

Director at Large: Sharon Langan 650-365-7160

Director at Large: Randall Takemoto-Hambleton 408-390-4324

Chairpersons

AOS Rep: Mary Gerritsen 650-348-6492

Librarian: Rex Castell 650-576-4637

Refreshment Chairpersons: Rebecca Grubbs 650-560-9037 & Olga Ostrovsky 650-631-0218

Sheath Editor: Chaunie Langland 510-494-8850 the_sheath_editor@earthlink.net

Sheath Snail Mail Co-ordinator: Jackie Becker

Accountant: Sue Rose 650-322-9853

Web Editor: Fred Cox 650-321-3542

Society Mailing Address: P.O.Box 6894

Website address: <http://penorchidsoc.org>

San Mateo, CA 94403-6894

*Time to prepare for our annual
auction - October 23*

*Our 2010 show will take place
January 23 & 24*

Judging will take place January 22

*Peninsula Orchid Society
The Sheath
Chaunie Langland, Editor
878 Cashew Way
Fremont, CA 94536*